

# 7 THINGS ClearGuide™ SPM CAN TELL YOU WHILE YOU ENJOY YOUR MORNING COFFEE.



## 1 NEED TO OPTIMIZE TIMING

### PROBLEM

Getting the timing right for traffic signals can make a big impact on traffic flow.

### SOLUTION

ClearGuide SPM can show which movements didn't use all their time and which ones may need more time.



## 2 VEHICLE DETECTION ERROR



### PROBLEM

When vehicle detection isn't working properly, the traffic signal doesn't know when to end the green subsequently running for the programmed time. Ultimately, this error wastes time when no one is actually at the signal.

### SOLUTION

ClearGuide SPM can identify when the green has been running for all its allocated time and detection may need to be evaluated.



## 3 POOR PROGRESSION

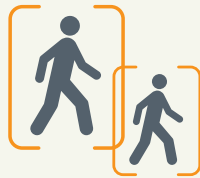
### PROBLEM

Proper signal timing must predict when vehicles will arrive at the intersection from the previous intersection. When this timing isn't set correctly, vehicles may arrive at a red traffic signal instead of progressing through on the green.

### SOLUTION

ClearGuide SPM shows when vehicles arrive at the intersection in relation to the signal indication.

## 4 PEDESTRIAN DETECTION ERROR



### PROBLEM

If a faulty pedestrian pushbutton is causing the pedestrian phase to service every time, then the delay to traffic may be significant

### SOLUTION

ClearGuide SPM can show traffic engineers how often the pedestrian phase is running and its impact on the traffic signal timing.

## 5 WAIT TIMES ARE TOO LONG



### PROBLEM

A common complaint is that a driver waited too long at a red light.

### SOLUTION

ClearGuide SPM charts the longest time a driver waited at each red light throughout the day. It even shows how long the driver waited while no one was using the green.



## 6 IT'S TIME FOR NEW TIMING

### PROBLEM

As communities grow and neighborhoods develop, so does the amount of traffic their roadways have to handle.

### SOLUTION

ClearGuide SPM counts the number of cars that turn left, through and right at each intersection providing data needed to develop new signal timing in models that will better accommodate the growth in traffic.



## 7 WHEN TO DO WHAT?

### PROBLEM

How do you know when one of these problems are occurring?

### SOLUTION

ClearGuide SPM monitors the performance of traffic signals within your system 24/7 and sends daily automated alerts based on customizable thresholds. Each contains a link to the specific chart and time that the activity occurred enabling you to quickly assess the situation and make informed decisions.